

ORANGE COUNTY

MAY 2006

HOME

DECOR | FURNISHINGS | GARDEN | ENTERTAINING



POOL PARADISE

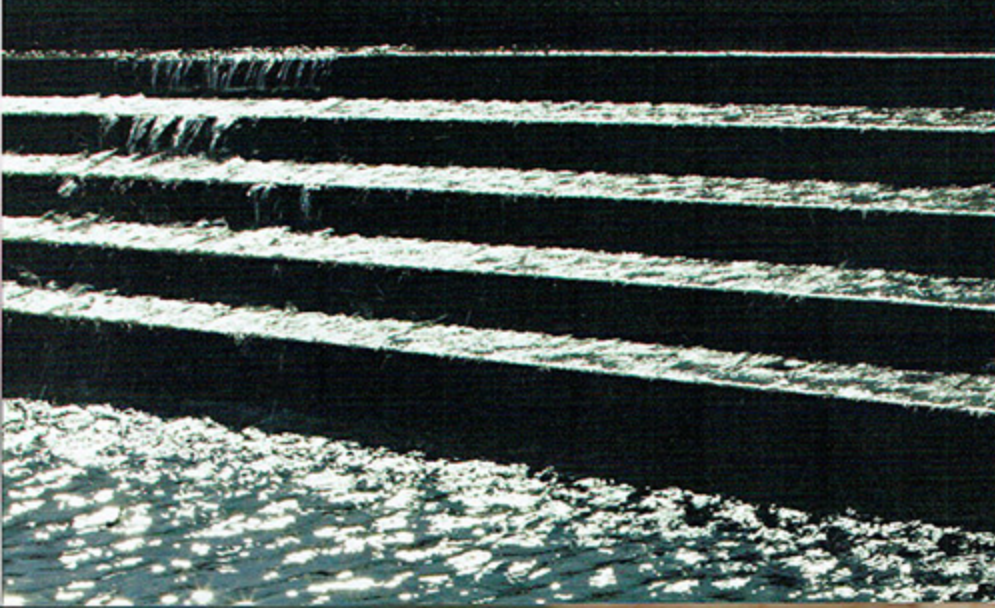
HEAVENLY WATER WONDERLANDS

SIZZLING SPAS

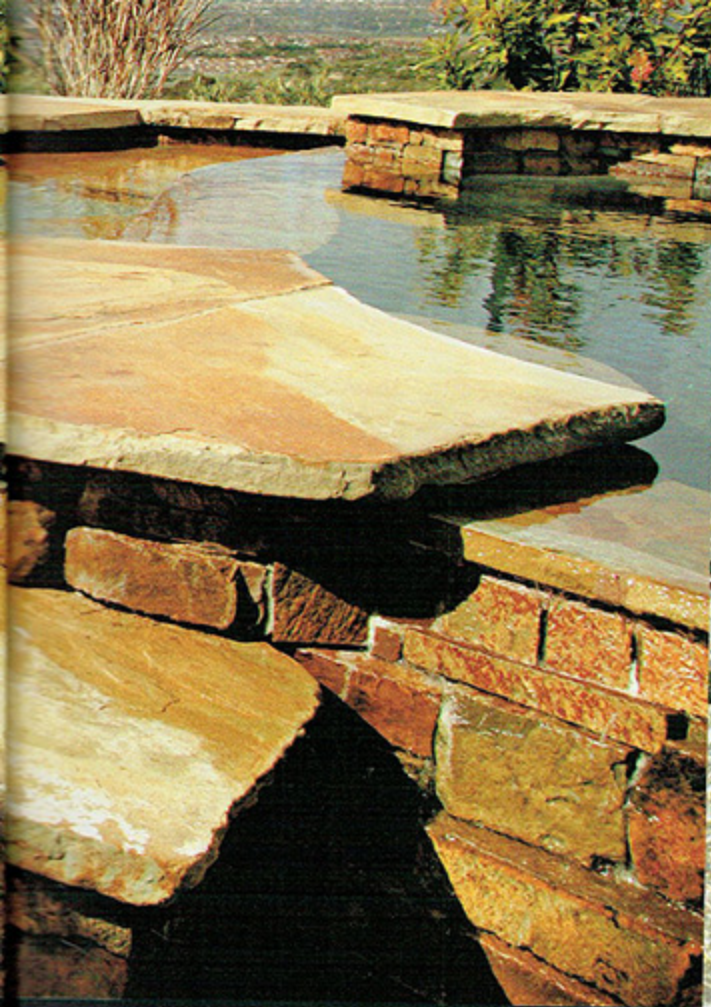
MASSAGING WHIRLPOOLS
ENTERTAIN AS WELL

BY JENNIFER J. BUSH
PHOTOGRAPHY BY CHAS METIVIER

PURPOSEFUL



Designs vary from a natural rock pool on Newport Coast, above left, to clockwise, a face emerging from a tile mosaic crafted on a shallow shelf; an angel standing sentry over an estate named Seventh Heaven; and water glistening as it melodically flows down a stepped waterfall.



POOLS

FOUR DESIGNS BY LANDSCAPE ARCHITECT
DAN STEWART SHOW VARIED BEAUTY,
FUNCTIONALITY OF POOLS IN LANDSCAPES.





Adventurers of all ages can play pirate at this Newport Coast home, where cannons dot the landscape. Some date from the early 1600s and weigh more than 2 tons.

PURPOSEFUL POOLS > SPLASHY PLAYGROUND

Rebecca and Matt Parsons chose natural rock for the pool and landscaping of their Tuscan-style home in Newport Coast. The colors of the stone blend with the surrounding hillsides.

"We wanted the yard to be informal, not uptight," said Matt Parsons. The design included areas where the couple's two boys, ages 3 and 5, could play.

The overall design of the saltwater rock pool was kept low to preserve the expansive view from their hilltop home. Varying depths were created among the separate areas.

"The homeowners wanted a variety of experiences for the children," said landscape architect Dan Stewart. The children enjoy traipsing through the stream, playing in the shallow beach area and swimming in the middle pool. Grasping ledges were designed on each level for the children, he said.

Coral sand with a granular feel was imported from Hawaii for the beach entry. The richer color blends well with the stone, Stewart said.

"The more adventuresome 12-foot quarry-style pool and diving boulder appeals to the adult kids," Stewart said. Ledger stone goes all the way down to the bottom at the deep end of the pool, which gives it a quarry-type look.

Although the waterfalls appear to be naturally occurring, they require the latest technology to maintain.

"Each of the pool levels have rimless infinity spillways, so the amount of pumping required is intense," Stewart said. "Each area has to be on a separate pumping system to adjust the flow of the water."

A mixture of grasses and reeds softens the amount of hardscape in the yard.

"Matt didn't want more than three of one type of plant in a row," Stewart said. The couple prefer a more unorganized appearance with an informal feel.

The landscape also sports something beyond the ordinary.

Matt Parsons' collection of cannons salvaged from the sea dot the property. A 4,600-pound Spanish cannon, which dates from the early 1600s, stands as if guarding the property from sea attack.

"They make great sculptural elements," Stewart said. "The heavy bronze cannon contrasts with the delicate, feathery plants."

The back yard offers separate seating areas, including a firepit and dining area. A covered lanai provides warmth from the large stone fireplace to take the chill off the ocean breezes.

Crista Nodland of Coastal Interiors designed the Moroccan-style lanai with a combination of vibrant colors and patterns. Old World accents, such as the Moroccan light fixture, give the space an exotic feel.



The natural rock pool at the Newport Coast home has several separate pools, rock shelves, waterfalls and streams.



The children have a sandbox, left, near a shallow pool where they can have their pirate adventures. The sand has a granular feel and was imported from Hawaii. Two comfortable chairs are set under a covered patio, above, affording views of the pool and coastline beyond.



With a last burst of color the sun sets, dappling the pool with orange shading to pink. The winged angel, carved of white Carrara marble, casts a shimmering shadow across the deep blue pool. Refreshments are set out for a poolside treat, left.



The design shows how a pool can be a critical element in drawing together a landscape design, unifying the overall composition.

An open lawn in front of the loggia allows those seated there to take advantage of the expansive views.

The loggia, along with the interior spaces of the estate, were designed by Karen Butera Interior Design of Corona del Mar. In addition, Designer Karen Butera King and husband Ric King acquired many of the exterior elements of the estate, including the winged angel.

The couple discovered the sculpture in a stone fabricating studio in Pietrasanta, south of Carrara, Italy, a town known for its quarries. The piece was one of the first artistic endeavors of the renowned sculptor, Marmi, created when the artist was just a boy.

Reluctant to sell the sculpture, the 70-year-old sculptor offered to have the piece re-created. But the couple requested the original. The homeowners wanted every element of their Italian home to be authentic.



As a result, "the home has a sense of place," King said.

The angel, weighing 2,204 pounds, required a crane to lift it over the house to its place where it watches over the infinity pool.

Warm light bathes the villa in the afternoon, top, tracing vivid reflections. A quiet spot near the pool, above, is perfect for watching the sun put on its evening show.





Formal landscaping enhances the grounds of this grand Italian estate in Pelican Crest. Landscape architect Dan Stewart designed the spa and cooling pool to be oriented to the expansive ocean view and canyon below.



PURPOSEFUL POOLS > STATELY STATEMENT

Formal landscaping enhances the grounds of this grand Italian estate in Pelican Crest. Neatly trimmed hedges, cypress trees and flowering magnolias contribute to the formality of the design.

Landscape architect Dan Stewart used the sloping, cliffside property efficiently. Because of the relatively small back yard, the homeowners opted for a spa and cooling pool, instead of a full-size swimming pool. A shallow intermediate lounging area with a mosaic medallion spills over into a 5-foot-deep cooling pool.

"The small pool has a big effect with its large, curved spillway," Stewart said. "It feels larger than it is."

The pool required extensive engineering to be built perched over the hillside, Stewart said. Deep caissons were installed down into the grade for stability.

All elements of the pool and outdoor living areas are oriented to the expansive ocean view. Colombian gold ledger stone frames the pool and blends with the colors of the home.

A geometric, grass-pattern terrace, potted junipers and a loggia garden contribute to the formal European styling.

Fruit trees and rosemary scale down on the terraced property. Olives and Italian cypress trees and dark purple Pride of Madeira surround the home.

"It's like an Italian garden nestled into the hillside," Stewart said.



Wine, cheese and grapes make for a perfect sunset at the spa, above. Formal landscaping enhances the grounds of this grand Italian estate in Pelican Crest, top. The small pool has a big effect due to its large curved spillway, left.

"It's like an Italian garden nestled into the hillside."

**DAN
STEWART**



PURPOSEFUL POOLS > DOING LAPS IN LUXURY

Kentia palms sway with the ocean breezes while the sounds of trickling water and the sweet smell of honeysuckle fill the air.

Landscape architect Dan Stewart and his wife, Robyn, created this experience in their own back yard after visiting resorts in Tahiti and the Cayman Islands.

"This is our own little Shangri-La," Dan said. "We wanted the relaxed, casual feel of an island resort."

A Burmese water jar, Buddha sculptures and teak furniture combine to give the yard a "Zenlike feel," he said.

The landscape architect made efficient use of the couple's small San Clemente yard by incorporating a salt-water lap pool that extends 52 feet along the property line. Varying the levels of the hardscape made the space appear larger, he said.

"When a landscape is flat, your eye quickly scans over it in an attempt to survey the space," he said. "So it appears smaller."

A raised patio with two teak lounge chairs provides a relaxing place to take in the views of the canyon and ocean beyond. Seamless glass acts as pool safety fencing without inhibiting the couple's hilltop views.

The colors of the natural rock hardscape blend with those of the surrounding canyon. Cashmere slate was used for patio

Dan Stewart designed a mosaic palm tree with a long trunk at the bottom of the lap pool to help guide swimmers. At left, teak furniture is set for an afternoon of poolside enjoyment.





surfaces. Flamed tropic brown granite adds a slip-resistant, rough texture along the rim of the pool, which gets regular workouts. A tunas green granite polished monolithic slab creates an impressive infinity spa spillway.

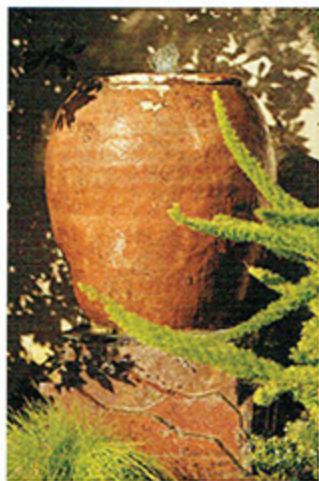
Instead of a painting a standard racing stripe on the bottom of the lap pool, Dan designed a mosaic palm tree with a long trunk to help guide swimmers. The mosaic was created using pieces of emerald pearl granite with reflective crystals that sparkle in the sun.

"Plants were used sculpturally following the shape of the pool," Dan said. Soft reeds and lavender combine with Showbiz roses. Trees were used strategically along the sides of the property as privacy screens. A New Zealand Christmas tree, giant Burmese honeysuckle vines and a *Melaleuca linariifolia* with papery bark give the landscape an exotic feel.

"Friday evenings are magical," Robyn said. With some romantic music playing in the background, the couple enjoys a martini under the warmth of the overhead heater.

"We sit and talk about our week and all the wonderful aspects of our life," she said. "We just gaze out at this magical pool, beautiful plants and the view that twinkles far beyond and truly think we are on vacation without a worry in the world."

Contact the writer at (714) 796-5020 or e-mail jbush@ocregister.com



A Burmese water jar and Buddha sculptures, above, combine with the couple's teak furniture to give the yard a "Zenlike" feel. Stewart designed several fountains in his garden, one, left, tucked in some plantings at one end of the lap pool.

RESOURCES

- Daniel Stewart & Associates Landscape Architects, San Clemente. (949) 361-9388
- Karen Butera Interior Design, Corona del Mar. (page 34) (949) 640-1300
- Designer Crista Nodland, Coastal Interiors, Newport Beach. (page 32) (949) 351-9142
- Elite Custom Pools and Spas, Lake Forest. (pages 34, 38, 40) (949) 859-1426
- Pure Water Pools, Costa Mesa. (page 32) (949) 646-3466

